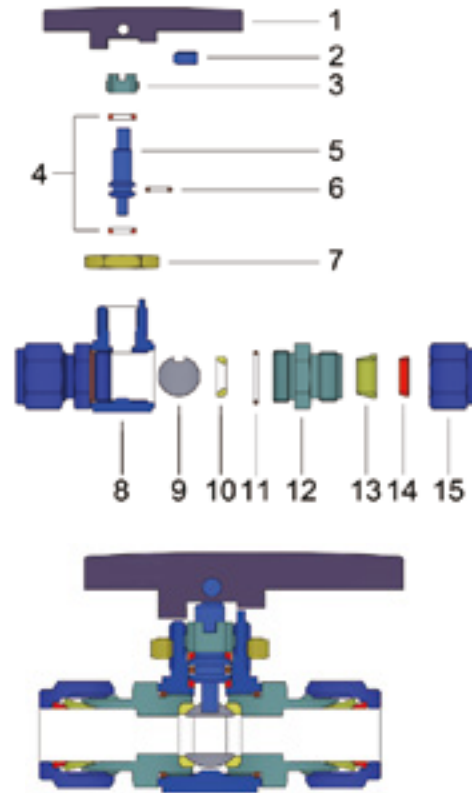


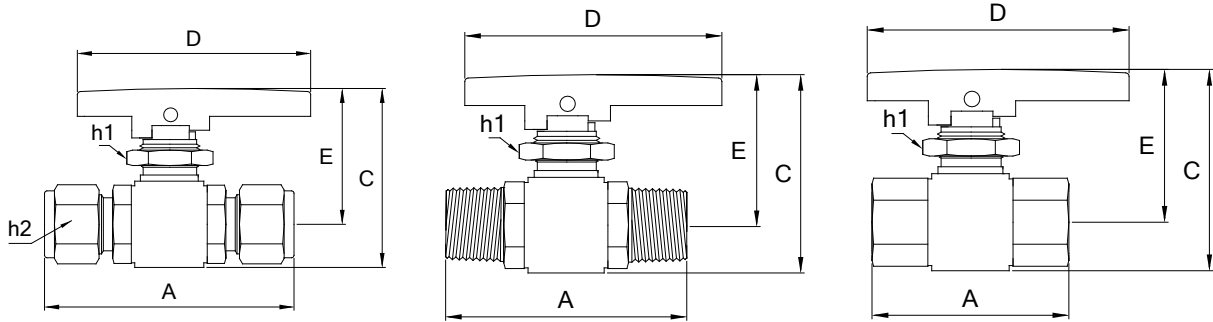
Standard Materials of Construction

Item	Components	Material
1	Handle	Nylon
2	Set Screw	SS304
3	Packing Bolt	SS316
4	Gland Packing	PTFE
5	Stem	SS316
6	Stem O-ring	Viton
7	Panel Nut	SS304
8	Body	SS316
9	Ball	SS316
10	Seat	PTFE
11	Body Seal O-ring	Viton
12	End Cap	SS316
13	Front Ferrule	SS316
14	Back Ferrule	SS316
15	Nut	SS316



Safety in Product Selection

The system designer and user have the sole responsibility for selecting a product for their use. The total system design, application details, material compatibility, function, adequate ratings, proper installation, operation, and maintenance must be considered to ensure safe and trouble-free performance.



End Connection	Inlet and Outlet Size	Orifice		Dimension						Panel Hole Size	Max Panel Thickness	
		mm	in.	A	C	D	E	h1	h2			
Compression End	Metric	6mm	5.0	0.19	63.0	48.5	44.6	38.5	19	9/16	14	6
		8mm	5.0	0.19	70.0	55.5	60.0	43.7	22	5/8	16	7
		10mm	7.0	0.27	73.0	55.5	60.0	43.7	22	19	16	7
		12mm	9.2	0.36	80.0	61.0	67.5	47.0	24	7/8	19	9
		14mm	12.5	0.49	87.5	67.5	80.0	50.5	24	25	19	9
		18mm	12.5	0.49	87.5	67.5	80.0	50.5	24	30	19	9
	Fractional	1/8"	2.5	0.09	61.0	48.5	44.6	38.5	19	7/16	14	6
		1/4"	5.0	0.19	63.0	48.5	44.6	38.5	19	9/16	14	6
		3/8"	7.0	0.27	71.0	55.5	60.0	43.7	22	11/16	16	7
		1/2"	9.2	0.36	80.0	61.0	67.5	47.0	24	7/8	19	9
Male Thread	Fractional	1/8"	5.0	0.19	49.0	48.5	44.6	38.5	19	-	14	6
		1/4"	5.0	0.19	55.0	48.5	44.6	38.5	19	-	14	6
		3/8"	7.0	0.27	61.0	55.5	60.0	43.7	22	-	16	7
		1/2"	9.2	0.36	71.0	61.0	67.5	47.0	24	-	19	9
Female Thread	Fractional	1/8"	5.0	0.19	45.4	48.5	44.6	38.5	19	-	14	6
		1/4"	5.0	0.19	53.0	48.5	44.6	38.5	19	-	14	6
		3/8"	9.2	0.36	65.0	61.0	80.0	47.0	24	-	19	9
		1/2"	12.5	0.49	78.0	67.5	80.0	50.5	24	-	19	9

* For compression end ball valve, the A dimensions is in finger-tight.
 * Fraction numbers are in inch size; the others are in mm size.
 * Dimensions are for reference only, and are subject to change without notice.